



MAVEN 65

The Maven 65 is a powerful, versatile twin-engine sweeping solution delivering exceptional performance.



HEAVY DUTY
OUTSTANDING PERFORMANCE

MAVEN 65

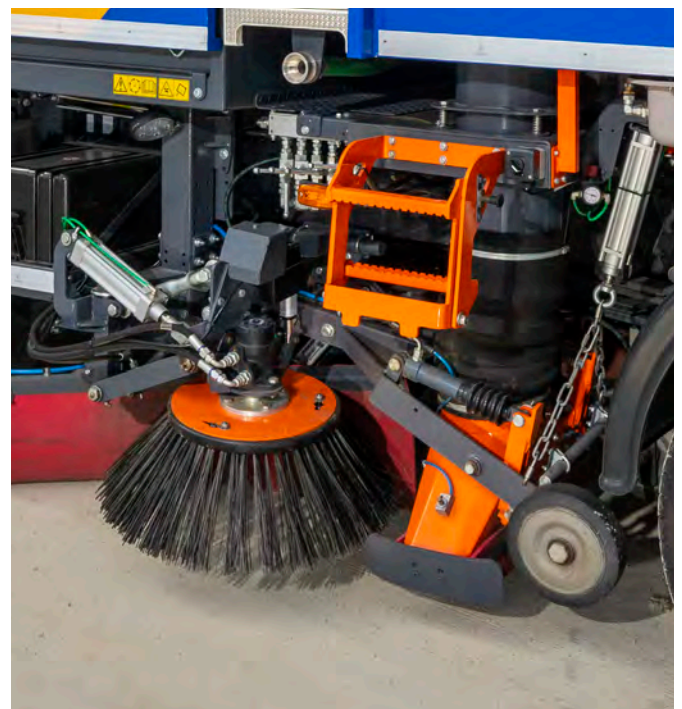


Whatever the application, wherever the location, the Maven 65 is an industry-leading solution for the most demanding of operations.

The Maven 65 is a heavy-duty twin-engine sweeper capable of being mounted onto virtually any internationally available 12 to 18 tonne GVW truck chassis. Incorporating all the benefits associated with Scarab equipment, the renowned quality and carefully selected range of options ensure the Maven 65 delivers outstanding performance in applications such as municipal, building works, road resurfacing and more.

DELIVERING MORE CHOICE WORLDWIDE

The Maven 65 can be supplied as a completely built machine from the factory or, for specific markets, it can be supplied as an export skid unit for local mounting in the country of destination.



HEAVY DUTY OUTSTANDING PERFORMANCE



Cost effective, heavy duty with versatile application:

SIZE:	12 - 18 tonne GVW
SWEEPING SPEED:	0 - 20mph/0 - 32kph
HOPPER CAPACITY:	6.5 cubic metres
WATER TANK:	1250 - 1900 litres
ENGINE:	Deutz TCD 3.6 L4 HP Stage V
CHASSIS FUEL TANK CAPACITY:	95 - 200 litres
AUXILLARY FUEL TANK CAPACITY:	200litres
TYPICAL PAYLOAD:	4500 - 9000kg
SWEEP WIDTH:	2345mm single/3600mm dual

Standard specification

- Stainless steel hopper
- Scarab high speed fan configuration
- Scarab CANbus control panel incorporating operational information, data logging and self diagnosis
- 1250 litre corrosion resistant water tank



Shot blasting the hopper's stainless steel body

The hopper is manufactured from strong, corrosion and abrasion-resistant 4003 Stainless Steel which is then shot blasted before a two-pack epoxy primer is applied, followed by a hard-wearing topcoat.

Fitted with lockers on both sides for additional storage, the hopper also provides particulate screening via a hinged stainless steel mesh filter, which swings down for ease of cleaning and provides access to the stainless steel inlet cone.





- Safe and easy access to the auxiliary engine and filters via a large dedicated service platform.
- A safety hopper prop automatically engages when the hopper is raised.
- A total corrosion resistant, glass reinforced plastic water tank is mounted under the hopper and provides the best weight distribution whilst driving and sweeping.
- All external automotive electrical components are IP67.

POWERFUL & RELIABLE SUCTION PERFORMANCE

A stainless steel, high speed, centrifugal impellor positioned in the hopper roof produces an efficient airflow path for high suction performance. Recent improvements to the suction path have resulted in even greater performance at lower RPM, while simultaneously reducing fuel consumption and noise.

The auxiliary engine is infinitely variable from 1100 - 1500rpm providing more than enough power for municipal or heavy duty work. A 1600rpm fan boost mode is available for resurfacing and tougher applications, ensuring a clean sweep everytime.

IMPROVING AIR QUALITY

Improving air quality is a daily challenge for many municipalities. The use of sweepers to reduce dust particulates in public areas is a common practice.



The Maven 65 has been awarded the 4 Star EUUnited PM10/2.5 Certification and is more than capable of collecting and suppressing particulate matter sized less than 2.5µm.

POWER & CONTROL

The Maven 65 has been designed for operators who prefer a twin-engine configuration but who also wish to benefit from the very best in sweeper design and technology. The Maven 65 has all the qualities that make Scarab the sweeper of choice for operators around the world.



CANBUS CONTROL SYSTEM

Scarab's CANbus control system revolutionised the way sweepers are operated and maintained. It continues to evolve today to offer market leading sweeper control.

Our latest CANbus control system offers colour coded door-pod and pedestal controls with key sweeping functions visible at a glance, and comfortably within reach. The large graphical display clearly indicates sweeping configuration and provides the user with regular updates on the vehicle, including warnings and service reminders. What's more, with real-time data-logging built into the system, you can monitor your performance and keep your sweeper functioning at its very best.

Scarab's CANbus includes universal connectors for fitment of Global Positioning System (GPS) and the option of real-time data availability via telematics.

“Scarab are at the cutting edge of developing innovative solutions to be more efficient with dust collection, reducing noise pollution and lowering carbon footprints”.



Quiet, efficient power in a self-contained unit

AUXILIARY ENGINE

The quiet, low-emission Deutz Stage V engine was selected for its ability to provide ample power at low rpm, with reduced fuel consumption, renowned reliability and without the need for Adblue. Its position, in between the hopper and the cab, affords ease of access for servicing.

All engine filters and main service points can be reached from the large service platform.

HYDRAULIC SYSTEM

The Scarab fluid drive system is directly coupled to the auxiliary engine. By eliminating drive belts, gearboxes and flywheel couplings, it ensures quiet, efficient sweeping and suction performance and a high degree of reliability.

All the hydraulic control components are housed in a secure locker and steel piping is used throughout.



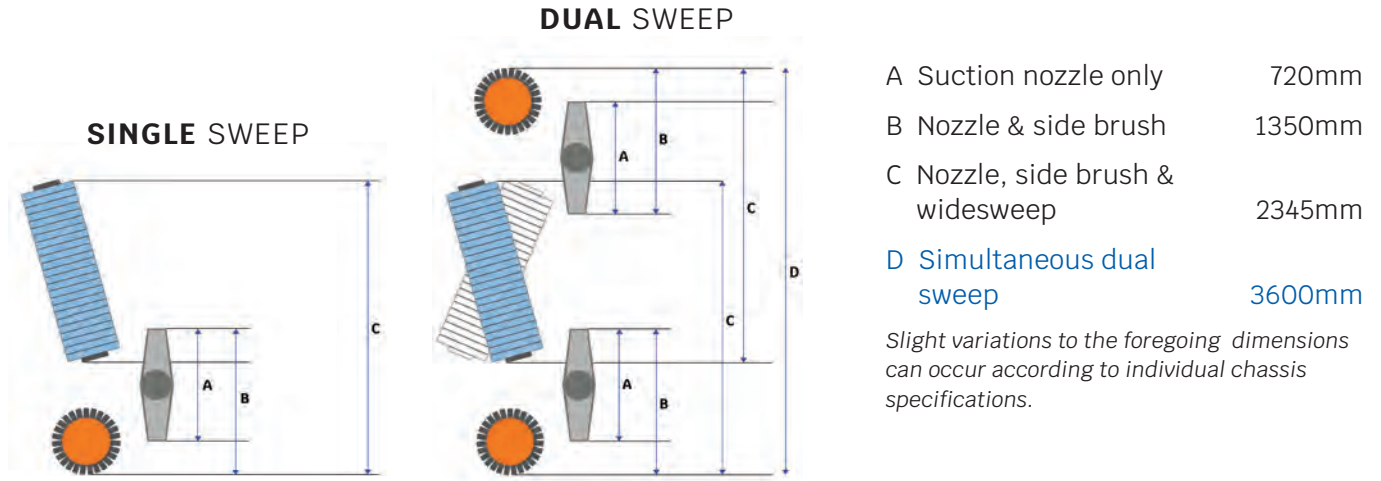
AFTER SALES SUPPORT

Our dedicated After Sales team are Scarab Sweepers' front-line ambassadors and it's their aim to provide you with the highest level of support for the lifetime of your vehicle, delivered through:

- **Industry renowned after sales care.**
- **A range of extended warranty options.**
- **A choice of 'Service', or 'Repair and Maintenance' solutions to suit your needs.**

STANDARD FEATURES

SWEEPING WIDTHS (based on a typical 15 tonne GVW chassis)



WEIGHTS AND DIMENSIONS

PAYLOAD

Typical Payload Potential 4500 - 900kg

TYPICAL DIMENSIONAL DATA

Length overall	6100 - 6800mm
Wheelbase	3260 - 3900mm
Width overall	2400mm
Overall height	hopper lowered 3100mm hopper raised 4735mm

CAPACITIES

Hopper*	Voided volume 6.5m ³ Payload volume 5.8m ³
Water tank**	1250 - 1900 litres

* Calculated in accordance with European Standard EN15429

** The option of an additional water tank is available subject to chassis selected

MADE IN BRITAIN, TRUSTED WORLDWIDE



UPGRADES / ENHANCEMENTS

OPTIONS (other options and operator specific requirements are available upon request)*



*Some options listed are chassis dependent

WATER

- High-pressure/high-volume pump with hand lance and self-retracting hose reel.
- Additional dust suppression for suction tubes (additional jets at the top of the suction tube).
- Simultaneous dual wash and sweep.
- Additional 650 litre water tank.
- Detergent injection kit for use with the hand lance on difficult cleaning operations.

BRUSHES

- Dual sweep (a second channel brush on opposite side of the sweeper and swivelling widesweep).
- Simultaneous dual sweep (both channel brushes and swivelling widesweep).
- Adjustable pressure control for channel brushes and widesweep.
- Auxiliary channel brush.
- Tilting brush.
- Vari brush (variable in/out brush control).

SUCTION SYSTEM

- Rear-mounted swing-out wander boom (left hand or right hand mounting).
- Door mounted rear boom.
- Roof mounted overhead boom.
- Polyurethane coating of suction path components.

MISCELLANEOUS

- CCTV camera to offside brush and/or rear of vehicle.
- Centralised lubrication system (either manual or automatic).
- Alternative or additional beacons.
- Work lights.
- Dual door pods for dual-steer chassis.

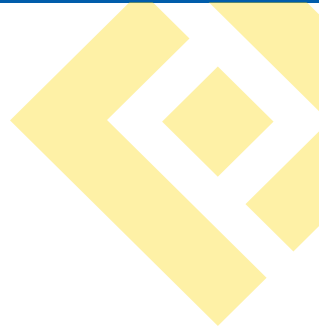


The Maven 65 can be fitted to most internationally available truck chassis from a range of manufacturers including: DAF, MAN, Mercedes, Renault, IVECO, Volvo, Hino, Freightliner, Peterbilt, VW and more. For details on suitable chassis specifications, please contact your local distributor.

MAVEN 65

www.scarab-sweepers.com

Dealership



SCARAB SWEEPERS LTD

Pattenden Lane, Marden,
Tonbridge, Kent,
United Kingdom TN12 9QD

TEL +44 (0)1622 831006

www.scarab-sweepers.com



SCARAB ♦ Leave nothing behind