

444

BACKHOE LOADER



Engine Power	74.4 kW or 82 kW
Operating Weight	9462 kg
Dig Depth	4826 mm/6218 mm (E-Stick)
Loader Breakout Force	60.7 kN
Controls	Seat Mounted Controls with Dual Mode



NEW MACHINES, ORIGINAL DNA

The first Cat® backhoe loader hit the road in 1985. The machine was co-developed by a team of designers in Illinois, U.S. and a manufacturing team in Desford, UK. The machines are still designed by experts to meet the needs of today's operators. Every model provides reliability, power and a top-quality operator environment to see you through the toughest projects. The latest backhoe loader range is crafted from 35 years of passion, expertise and experience.

THE NEW CAT® 444

TAKE CONTROL IN YOUR NEW
BACKHOE LOADER



MORE CONTROL FOR YOU

- + **SAVE FUEL** – SAVE UP TO 10% IN FUEL WITH THE NEW CAT C3.6 ENGINE, WHICH IS DESIGNED TO MEET THE LATEST EMISSIONS STANDARDS.
- + **SEAT-MOUNTED CONTROLS** – OPERATE IN COMFORT WITH ERGONOMIC, SEAT-MOUNTED ELECTRO-HYDRAULIC CONTROLS. THESE ARE DESIGNED TO GIVE YOU MORE CONTROL OVER EVERY MOVE.
- + **CHOOSE YOUR SETTINGS** – USE THE DISPLAY SCREEN TO SET YOUR PERSONAL OPERATOR PREFERENCES, SO YOU CAN WORK AT A PACE THAT SUITS YOU, EVERY TIME.
- + **EASY TO OWN AND OPERATE** – WITH MONTHLY PAYMENT OPTIONS, FUEL SAVINGS AND BEST-QUALITY PARTS AND ENGINEERING, IT'S EASIER AND MORE AFFORDABLE THAN EVER TO OWN AND OPERATE A CAT BACKHOE LOADER.



POWERFUL LOAD SENSING HYDRAULIC SYSTEM

FLOW-SHARING VALVES

Actively manage the flow of oil between each function of the machine. When the operator demands multiple operations the machine responds, providing smooth, effortless operation.

VARIABLE DISPLACEMENT PISTON PUMP

A high capacity variable displacement piston pump allows for perfect matching of power and operator demand, providing power when it is needed whilst contributing to great fuel economy.

MORE COMFORT AND CONTROL

With Electro-Hydraulic Controls the operator can customize both the speed and responsiveness of the rear hydraulics to get the perfect feeling of control. This, as well as the pattern changer, is managed through the display screen. Adjustable aux flow can also be adjusted through the display screen allowing the operator to perfectly match machine and attachment.

BACKHOE

BUILT FOR THE TASK



HIGH-ROTATION LINKAGE

The Cat backhoe linkage provides an industry-leading 205 degrees of bucket rotation. This design helps with material retention when truck loading and with vertical wall-trenching. Improved performance and efficiency are achieved by the ability to do more with less movement.

EXCAVATOR-STYLE BOOM

Whether close-up truck loading or digging over obstacles, the iconic excavator-style boom tackles the toughest jobs with ease. Combine this versatility with powerful breakout forces, controllability, a powerful hydraulic system and the 444 is capable of high levels of productivity with minimum effort. The boom is a narrow design, ensuring maximum visibility to the attachment and ground. The hoe comes with the choice of either a 4.3 m or 4.9 m stick option.

CAT CUSHION SWING

The standard Cat Cushion Swing System smooths the backhoe swing function when returning to the trench. Operators will immediately appreciate being able to line up the bucket edge on the trench wall faster and with more control.

SIDE SHIFT FRAME

The Side Shift Frame has exterior lock clamps, with no disassembly needed when servicing. The frame is a solid design with E-Coat protection preventing material build up in the frame, reducing the risk of rust and increasing the life of the frame.

EXTENDIBLE STICK

The extendible stick comes as an option for applications where more versatility is needed. Increasing dig depth and reach capability by 921 mm reduces the amount of machine repositioning and therefore reducing site damage and increasing productivity. A sliding inner section design helps to ensure the wear pads remain as dirt free as possible, prolonging adjustment and replacement intervals. Auxiliary lines, for operating hydraulic attachments, have been routed so that they are protected from damage when working in the narrowest of trenches.

POWERED SIDE SHIFT (OPTIONAL)

Available as an option either from the factory or as a dealer fitted kit, the powered side shift solution provides a hydraulic service to allow the operator to easily position the backhoe across the full width of the Side Shift Frame. Ideal for use in areas with minimal space and utility applications such as gas, electrical, and telecoms.

POWER TRAIN

POWERFUL, PROVEN AND EFFICIENT

C3.6 ENGINE

The Cat C3.6 engine, which meets EU Stage V emission standards, reduces owning and operating costs while maintaining the same performance and power as the C4.4 engine. The aftertreatment is a compact, maintenance-free solution of DOC, SCR and DPF. The Cat C3.6 engine is a turbocharged in-line four-cylinder, four-stroke cycle with direct injection diesel engine. Cold starting capability down to -25°C comes as standard with a cold starting package option allowing the machine to start down to -47°C . This engine has a 12 volt starting motor with a 750 CCA maintenance-free battery. This engine gives up to 10% fuel savings, based upon application and machine setting, compared to the C4.4 engine.

POWER MANAGEMENT MODES

Three power management modes are available: Eco, Standard and Standard Plus. Depending upon application or performance needs, the operator can select the mode that gives optimum results. Eco mode limits both pump flow and engine speed giving higher fuel saving benefits whereas Standard Plus gives maximum pump flow and engine speed, providing increased power and performance where needed.

TRANSMISSIONS

The 6-speed automatic shift transmission comes as standard on the 444, providing greater efficiency by ensuring that the correct gear is always selected. The Lock-up Torque Converter option is ideal for those who do a lot of roading as it can give up to 15% fuel efficiency savings on the road and maintain travel speed in hilly environments.

EQUAL SIZED TIRES

With 4 equal sized tires, this machine is capable of increased lifting performance. Better flotation makes an EST ideal for applications with poor ground conditions. The EST machines also offer all wheel steering to improve maneuverability around the job site.

AXLES AND DIFFERENTIAL LOCK

Heavy duty axles and a 100% locking rear differential come as standard on Cat backhoe loaders. The axles provide high durability whilst providing superb traction on uneven surfaces. No daily greasing is required on the front axle helping to save both time and money, keeping owning and operating costs as low as possible. The Diff-lock improves performance by giving maximum traction in all conditions.





LOADER PERFORMANCE

MAKING LIGHT WORK OF LIFTING AND LOADING

PARALLEL LIFT

Parallel lift loader arms offer excellent forward visibility and self-leveling, ensuring excellent material retention throughout the lift and lower cycles.

RIDE CONTROL

This option offers loader suspension to improve operator comfort and productivity. When moving around the job site or transporting the machine on the road, ride control provides extra stability which creates an easier ride for the operator and helps material retention to improve operator efficiency.

RETURN TO DIG

Return to Dig allows the operator to return the bucket to a preset level, this is great for applications with repetitive work cycles especially when working with forks. When not required, for instance when grading with the loader bucket, Return to Dig can be turned off within the display screen.

IT QUICK COUPLER

This option is available from the factory or as a dealer fitted kit, providing the extra versatility needed when working in multiple applications. This coupler allows a quick and safe change between multiple attachments from the inside of the cab.

THE CLASS LEADING OPERATOR ENVIRONMENT JUST GOT BETTER

SET YOUR MACHINE PERFORMANCE TO INCREASE
PRODUCTIVITY AND EFFICIENCY

LCD OPERATOR DISPLAY

The LCD operator display comes standard as a softkey display or can be upgraded to touchscreen. Through the interactive display you can get updates on machine diagnostics and upcoming service intervals, as well as being able to configure various performance parameters dependent on configuration. This helps to match machine performance to operator preference further increasing productivity and efficiency. Optional machine security system is embedded into the display screen helping to keep your Cat backhoe loader secure.



OPERATOR COMFORT

To reduce operator fatigue and increase efficiency, the air suspension seat comes as standard with switches and controls being ergonomically located within reach of the operator. Diff-Lock button, Transmission kickdown and auxiliary controls are all located on the loader control giving power and control at the operator's fingertips. Great visibility allows the operator to get the job done in a safe and efficient manner.



SEAT-MOUNTED CONTROLS

The all new Electro Hydraulic Seat Mounted controls offer the ultimate in comfort and control for operators. The loader or excavator can be operated from any seated position, even whilst sat offset helping to improve productivity and performance all in a safe and efficient manner. The Electro Hydraulic solution also offers operators the ability to speed up or slow down the hydraulics to match machine performance to either their preference or the job at hand.



ATTACHMENTS

A WIDE RANGE OF CATERPILLAR ATTACHMENTS ARE AVAILABLE TO MEET THE NEEDS OF YOUR JOB SITE APPLICATIONS.

Our attachments are engineered, balanced and tested to each Cat backhoe loader model, promising to minimize stress and optimize performance.

LOADER BUCKETS

General Purpose loader buckets are available as well as the hydraulically operated Multi-Purpose bucket.

OTHER AVAILABLE LOADER TOOLS INCLUDE:

- + BROOMS
 - + MATERIAL HANDLING ARMS
 - + TRUSS BOOMS
 - + FORKS
 - + BLADES
-

EXCAVATING BUCKETS

Cat Attachments provide a range of buckets in various sizes. It is easy to find the correct bucket for the application with a range including:

- + STANDARD DUTY
- + HEAVY DUTY
- + HIGH CAPACITY HD
- + DITCH CLEANING
- + CRIBBING
- + GRADING

OTHER AVAILABLE BACKHOE TOOLS INCLUDE:

- + COLD PLANERS
- + HAMMERS
- + AUGERS
- + VIBRATORY COMPACTION PLATES
- + RIPPER

BACKHOE QUICK COUPLER

Manual or hydraulic backhoe couplers make rear tool exchange quick, easy and safe. Cat dual-lock couplers have a self-adjusting wedge design to ensure a tight fit. They also feature a safety lock which automatically engages.



EASY TO OPERATE

EASY TO MAINTAIN

DAILY SERVICE POINTS

Caterpillar understands that the easier a task is the more likely it is to be done. We have ensured that servicing the Cat backhoe loader is as simple as it can be. All daily check points are grouped together and are easy to access from a large service platform.

HINGED COOLING PACK

The hood opens to reveal the engine and a unique Cat designed hinged cooling pack. The air conditioning pack lifts up and the radiator tilts forward with no tooling required, giving easy access for debris removal whether you are in the workshop or on a job site, keeping optimal cooling performance.

WEAR PAD ADJUSTMENTS

The Extendible Stick (E-Stick) is designed to be self-lubricating, to minimize the need for operator interaction. The stabilizers and E-Stick all have easily adjustable wear pads that require no disassembly. When wear pad adjustments are necessary, the adjustment bolts are easy to access, taking minutes to complete.

CAT FILTERS

All Cat filters are vertically mounted for spill free servicing and reduced oil contamination. These low micron filters remove microscopic particles from the oil, keeping the engine, transmission and hydraulic system running smoothly for years.

A-PIN GREASING

A-Pin grease point has been relocated to give ground level access without needing access to the engine bay, reducing time spent maintaining the machine.

BATTERY/STORAGE BOX

The batteries and battery disconnect switch are conveniently located in the external right hand side lockable storage box for easy access. The box also leaves sufficient space to be able to store grease gun, spanner, etc.



YOUR MACHINE

YOUR SUPPORT



MACHINE SELECTION

Your dealer can help you with your machine purchase decision, based on your requirements and help keep operating costs to a minimum. Is the machine you have in mind exactly the best for your job, or could there be a more suitable solution?

CUSTOMER VALUE AGREEMENTS (CVA'S)

Your Cat dealer can offer a comprehensive range of CVA's which can be individually tailored to suit your requirements. Dealers can offer a range of options from a full preventative maintenance with S-O-SSM package to a parts only CVA. Protect your valuable investment and know exactly what your monthly payments will be to help you run your business.

EQUIPMENT PROTECTION PLAN (EPP)

You count on your Cat machines to get the job done, day in and day out. Choose a protection plan that's just as dependable and long-lasting. EPP offers the only coverage designed specifically for new Cat equipment – giving you the highest level of repair cost protection available. Talk to your dealer today to find out what EPP solution is the best for you!

FINANCE

Have you explored the range of options available from your dealer to finance your machine? They can offer a selection of attractive packages tailored to suit your every requirement.

TRAINING AND SUPPORT

Speak to your dealer about any additional support you may need. They can give you the latest in operating techniques to minimize wear and tear, maximize productivity, lower owning and operating costs and help you make the most of the fantastic features offered on the Cat backhoe loaders.

TECHNICAL SPECIFICATIONS

See *cat.com* for complete specifications.

ENGINE	EU STAGE V (STANDARD)	EU STAGE V (OPTIONAL)
Engine	C3.6 74.4 kW Electronic Turbo Intercooled	C3.6 82 kW Electronic Turbo Intercooled
Ratings at 2,200 rpm		
Gross Power SAE J1995:2014	76 kW/103 hp	84 kW/114 hp
Engine Power ISO 14396:2002	74 kW/101 hp	82 kW/111 hp
Net Power Rating @ 2,200 rpm		
SAE J1349:2011	68 kW/92 hp	76 kW/103 hp
ISO 9249:2007	68 kW/92 hp	75 kW/102 hp
Torque Rise (net)	48% @ 1,500 rpm	48% @ 1,500 rpm
Net Torque – SAE J1349	436 N·m	485 N·m
Bore	98 mm	98 mm
Stroke	120 mm	120 mm
Displacement	3.6 L	3.6 L

- Net power advertised is the power available at the flywheel when the engine is equipped with fan, air cleaner, muffler and alternator.
- No derating required up to 3048 m altitude. Auto derate protects hydraulic and transmission systems.
- Meets EU Stage V emission standards.
- Advertised power is tested per the specified standard in effect at the time of manufacture.

TRANSMISSION	AUTOSHIFT TRANSMISSION (STANDARD)	AUTOSHIFT TRANSMISSION WITH LOCK-UP TORQUE CONVERTER (OPTIONAL)
Travel speeds of backhoe loader at full throttle, when equipped with 440/80R28 Rear Tires and HRC 74.4 kW Engine.		
Forward		
1st	6 km/h	6 km/h
2nd	10 km/h	10 km/h
3rd	12 km/h	12 km/h
4th	20 km/h	20 km/h
5th	27 km/h	27 km/h
6th	40 km/h	40 km/h
Reverse		
1st	6 km/h	6 km/h
2nd	12 km/h	12 km/h
3rd	27 km/h	27 km/h
4th	—	—

TECHNICAL SPECIFICATIONS

See *cat.com* for complete specifications.

AXLE RATINGS	
Front Axle, AWD	
Static	22 964 kg
Dynamic	9186 kg
Rear Axle	
Static	22 964 kg
Dynamic	9186 kg

WEIGHTS*		
Operating Weight*	9462 kg	
Operating Weight (maximum) (ROPS capacity)	11 500 kg	
Cab, ROPS/FOPS	Standard	
Auto-Shift Transmission	Standard	
Ride Control	15 kg	
Air Conditioning	32 kg	
All-Wheel Drive	Standard	
MP Bucket (1.3 m³)		
with Fold-over Forks	1020 kg	
without Fold-over Forks	841 kg	
Loader QC	185 kg	
4.3 m Extendible Stick	199 kg	
4.9 m Extendible Stick	355 kg	
Maximum Counterweight	115 kg	
Minimum Counterweight Recommendations – Standard Stick		
Loader Bucket	No QC	IT Loader with QC
GP	0 kg	115 kg
MP	0 kg	115 kg
Minimum Counterweight Recommendations – Extendible Stick		
Loader Bucket	No QC	IT Loader with QC
GP	0 kg	115 kg
MP	0 kg	115 kg
Total Gross Weight Not to Exceed	11 500 kg	
*Machine Configuration – HRC 74.5 kW engine; 4.3 m standard stick hoe; standard cab with A/C; AWD autoshift transmission; 1.3 m ³ MP loader bucket; 600 mm standard duty hoe bucket; 440/80R28 tires; no counterweight; 80 kg operator; full fuel tank.		

HYDRAULIC SYSTEM	
Type	Closed Center
Pump Type	Variable-Flow, Axial Piston
Pump Capacity @ 2,200 rpm	187 L/min
System Pressure	
Backhoe	250 bar
Loader	250 bar

STEERING	
Type	Front Wheel
Power Steering	Hydrostatic
AWD Cylinder, One (1) Double-acting	
Bore	85 mm
Stroke	117 mm
Rod Diameter	42mm
Axle Oscillation	8 mm
Turning Circle (28" Tires)	
AWD (inner wheel not braked)	
Outside Front Wheels	9.8 m
Outside Widest Loader Bucket	12.59 m

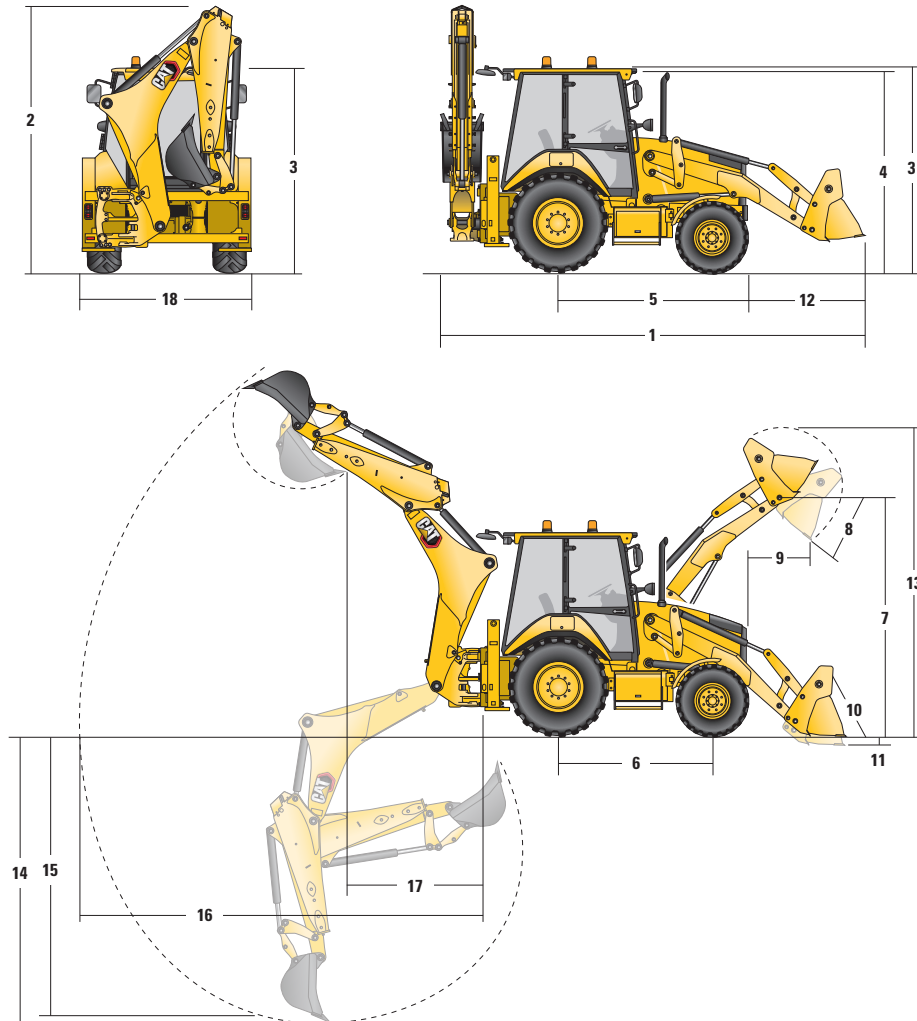
SERVICE REFILL CAPACITIES	
Cooling System with A/C	17.5 L
Fuel Tank	160 L
Engine Oil with Filter	9 L
Diesel Exhaust Fluid	19 L
Transmission (Autoshift)	19 L
Rear Axle	16 L
Planetaries	1.7 L
Front Axle	14 L
Planetaries	1.7 L
Hydraulic System	95 L
Hydraulic Tank	42 L

(continued on next page)

TECHNICAL SPECIFICATIONS

See *cat.com* for complete specifications.

MACHINE DIMENSIONS



	Parallel Lift Loader			Parallel Lift Loader with QC	
	GP – 1.3 m ³	MP – 1.3 m ³	MP with Forks – 1.3 m ³	GP/QC – 1.3 m ³	MP/QC – 1.3 m ³
1 Overall Length in roading position	5824 mm	5847 mm	5847 mm	5840 mm	5877 mm
Overall Transportation Length	5859 mm	5889 mm	5889 mm	5933 mm	5978 mm
2 Overall Transport Height (standard stick)	3826 mm	3826 mm	3826 mm	3826 mm	3826 mm
Overall Transport Height (extendible stick) (4.9 m)	4005 mm	4005 mm	4005 mm	4005 mm	4005 mm
Overall Width	2322 mm	2322 mm	2322 mm	2322 mm	2322 mm
3 Height to Top of Cab/Canopy	2897 mm	2897 mm	2897 mm	2897 mm	2897 mm
4 Height to Top of Exhaust Stack	2861 mm	2861 mm	2861 mm	2861 mm	2861 mm
5 Rear Axle Centerline to Front Grill	2795 mm	2795 mm	2795 mm	2795 mm	2795 mm
6 Wheelbase AWD	2235 mm	2235 mm	2235 mm	2235 mm	2235 mm

Dimensions and performance specifications shown are for machines equipped with 440/80R28 rear tires, standard cab, standard stick with 600 mm standard duty bucket, and 1.3 m³ MP loader bucket and standard equipment unless otherwise specified.

TECHNICAL SPECIFICATIONS

See cat.com for complete specifications.

LOADER BUCKET DIMENSIONS AND PERFORMANCE					
	1.3 m ³ Buckets			Parallel Lift Loader with QC	
	GP – 1.3 m ³	MP – 1.3 m ³	MP with Forks – 1.3 m ³	GP/QC – 1.3 m ³	MP/QC – 1.3 m ³
Capacity (SAE rated)	1.3 m ³	1.3 m ³	1.3 m ³	1.3 m ³	1.3 m ³
Width	2434 mm	2434 mm	2434 mm	2434 mm	2434 mm
Lift Capacity at Maximum Height	4663 kg	4310 kg	4130 kg	4416 kg	4046 kg
Lift Breakout Force	60 672 N	57 112 N	55 303 N	57 809 N	53 966 N
Tilt Breakout Force	62 442 N	58 441 N	57 041 N	55 980 N	50 955 N
Tipping Load at Breakout Point	7503 kg	7109 kg	6937 kg	7054 kg	6606 kg
7 Maximum Hinge Pin Height	3615 mm	3615 mm	3615 mm	3615 mm	3615 mm
8 Dump Angle at Full Height	45°	45°	45°	45°	45°
Dump Height at Maximum Angle	2847 mm	2826 mm	2826 mm	2794 mm	2763 mm
9 Dump Reach at Maximum Angle	923 mm	944 mm	944 mm	971 mm	1008 mm
10 Maximum Bucket Rollback at Ground Level	42°	42°	42°	42°	42°
11 Digging Depth	56 mm	56 mm	56 mm	59 mm	55 mm
Maximum Grading Angle	111°	111°	111°	110°	108°
12 Grill to Bucket Cutting Edge, Carry Position	1464 mm	1488 mm	1488 mm	1482 mm	1518 mm
13 Maximum Operating Height	4617 mm	4621 mm	4621 mm	4663 mm	4685 mm
Weight (does not include teeth)	472 kg	827 kg	1020 kg	637 kg	989 kg

BACKHOE DIMENSIONS AND PERFORMANCE					
	Standard Stick	E-stick Retracted – 4.3 m	E-stick Extended – 4.3 m	E-stick Retracted – 4.9 m	E-stick Extended – 4.9 m
	14 Digging Depth, SAE Maximum	4331 mm	4335 mm	5312 mm	4686 mm
Digging Depth, Manufacturer's Maximum	4826 mm	4831 mm	5747 mm	5271 mm	6218 mm
15 Digging Depth, 2400 mm Flat Bottom	3956 mm	3960 mm	5022 mm	4341 mm	5416 mm
Digging Depth, 600 mm Flat Bottom	4288 mm	4291 mm	5278 mm	4654 mm	5671 mm
Digging Depth, 600 mm Flat Bottom, Manufacturer's	4818 mm	4823 mm	5744 mm	5244 mm	6215 mm
Reach from Rear Axle Centerline at Ground Line	6742 mm	6748 mm	7673 mm	7219 mm	8171 mm
16 Reach from Swing Pivot at Ground Line	5652 mm	5658 mm	6583 mm	6129 mm	7081 mm
Maximum Operating Height	5596 mm	5595 mm	6163 mm	6172 mm	6869 mm
Loading Height	3927 mm	3938 mm	4505 mm	4495 mm	5192 mm
17 Loading Reach	1808 mm	1758 mm	2641 mm	1696 mm	2482 mm
Swing Arc	180°	180°	180°	180°	180°
Bucket Rotation	205°	205°	205°	205°	205°
18 Stabilizer Overall Width	2352 mm	2352 mm	2352 mm	2352 mm	2352 mm
Bucket Dig Force	63 433 N	63 404 N	63 404 N	63 414 N	63 414 N
Stick Dig Force	42 770 N	43 468 N	31 646 N	47 173 N	35 084 N

STANDARD & OPTIONAL EQUIPMENT

Standard and optional equipment may vary. Consult your Cat dealer for details.

CAB ROPS AND FOPS	STANDARD	OPTIONAL	HYDRAULICS	STANDARD	OPTIONAL
Cab, Standard	•		Variable Displacement Piston Pump	•	
Cab, Deluxe		•	Hydraulic Quick Disconnects		•
			Side Shift Lock	•	
TIRES/STEERING/BRAKES	STANDARD	OPTIONAL	Hydraulic Oil Cooler	•	
All Wheel Drive	•		Hydraulic Lines, One Way		•
All Wheel Steer	•		Hydraulic Lines, Two Way		•
100% Differential Lock	•		Loader Kickout, Float	•	
Hydraulic Boosted Brakes	•		Loader Kickout, Return to Dig	•	
Tires 24 inch	•		Powered Side Shift		•
Tires 28 inch		•	Ride Control		•
ENGINE/TRANSMISSION	STANDARD	OPTIONAL	Continuous Flow	•	
Engine, C3.6 74.4 kW	•		Programmable Auxiliary Flow	•	
Engine, C3.6 82 kW		•	BOOMS, STICKS AND LINKAGES	STANDARD	OPTIONAL
Battery, 750 CCA, Standard	•		Stick Standard, 4.3 m	•	
Battery, 750 CCA, Heavy Duty		•	Stick Extending, 4.3 m		•
Hinged Radiator Pack	•		Stick Extending, 4.9 m		•
Auto Idle	•		Hoe Quick Coupler, Mechanical		•
Eco Mode	•		Hoe Quick Coupler, Hydraulic		•
Standard Mode	•		Loader Quick Coupler, Hydraulic		•
Standard + Mode	•		Transport Lock, Swing	•	
Engine Block Heater		•	Transport Lock, Boom	•	
Transmission Neutralizer	•		OTHER ATTACHMENTS	STANDARD	OPTIONAL
Transmission, Six Speed Autoshift	•		Counterweight, 115 kg		•
Transmission, Six Speed Autoshift with Lock-Up Torque Converter		•	Counterweight, 240 kg		•
CONTROLS	STANDARD	OPTIONAL	Counterweight, 460 kg		•
Controls, Electro Hydraulic Seat Mounted	•		Front Fenders		•
Pattern Selector (ISO/SAE)		•	Street Pads, Stabilizers		•
Power Steering, Hydrostatic	•		External Tool Box	•	
ELECTRICAL	STANDARD	OPTIONAL	Transport Tie Downs	•	
Display Screen, Soft Key	•				
Display Screen, Touchscreen		•			
Product Link Cellular	•				
Product Link, Dual Mode (cellular and satellite)		•			
Reversing Alarm	•				
Stabilizer Alarm	•				
Beacon, Rotating		•			
Beacon, Strobe		•			

Not all features are available in all regions. Please check with your local Cat dealer for specific offering availability in your area.

For additional information, refer to the Technical Specifications brochure available at www.cat.com or your Cat dealer.

For more complete information on Cat products, dealer services and industry solutions, visit us on the web at www.cat.com

© 2022 Caterpillar. All Rights Reserved.

Materials and specifications are subject to change without notice. Featured machines in photos may include additional equipment. See your Cat dealer for available options.

CAT, CATERPILLAR, LET'S DO THE WORK, their respective logos, "Caterpillar Corporate Yellow," the "Power Edge" and Cat "Modern Hex" trade dress as well as corporate and product identity used herein, are trademarks of Caterpillar and may not be used without permission.

www.cat.com www.caterpillar.com

AEHQ8339-01
Replaces AEHQ8339
Build Number: 07A
(Europe)

